



Phoebus P529



Vital Signs Monitoring System

Ideal Partner for Critical Care

- ❖ Anesthesia
- ❖ Recovery Units
- ❖ Operating Room
- ❖ Intensive Care
- ❖ Neonatal Care
- ❖ Emergency



Next generation patient care with proven technologies

Oxygen Delivery

- **Nellcor SpO₂**
 - Motion Tolerant Pulse Oximeter
 - Low perfusion performance
 - CCHD (Critical Congenital Heart Defects) Screening



Hemodynamics

- **SunTech NIBP**
 - Standard Motion Tolerance
 - Clinical Grade Performance
 - Adults, Pediatrics, Neonatal Range
- **IBP**
 - Artery Pressure
 - Pulmonary Artery Pressure
 - Central Vein Pressure
 - LAP, RAP, ICP
- **Temperature**



- Invasive Blood Pressure



Respiration

- EtCO₂
- ICO₂
- RR



- Robust and long life pump reduces periodic maintenance
- No calibration required
- Proprietary sample cell protects internal NDIR components for contamination
- Unique accessories and supplies for all patients



- Light weight and compact design
- Rugged, solid state with no moving parts
- Fast, accurate on airway measurement
- No calibration required

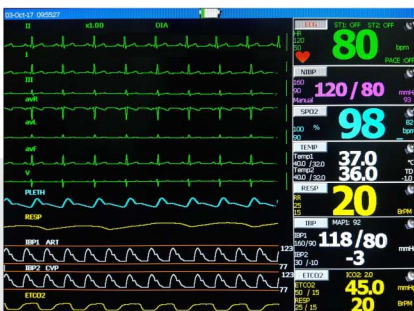


Heart

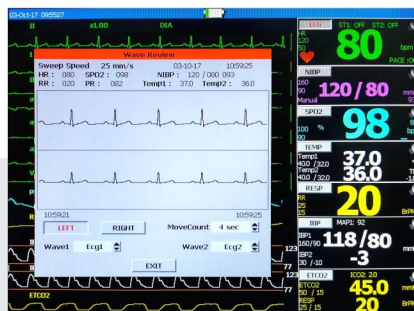
- Five / Three Lead ECG
- Arrhythmia Detection

- ST level indication
- Pace Detection

- Full Disclosure ECG upto 7 waveforms
- Diagnostic, Monitor and Surgical mode



ECG Full Lead

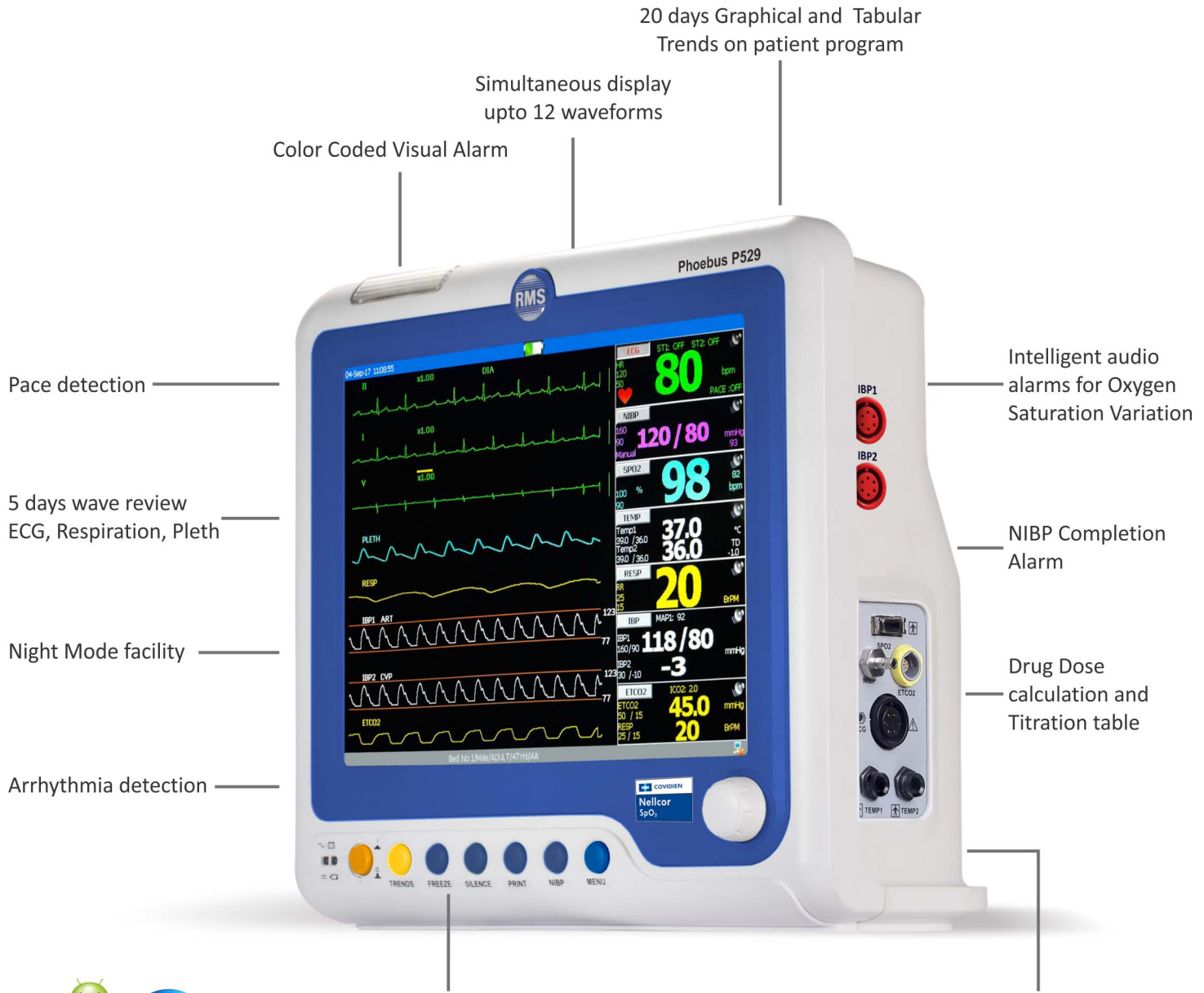


5 Days Wave



NIBP Trend

Adult, Pediatric and Neonatal monitoring



Rubberized Color Coded Keypad

Li-ion Rechargeable Battery



Energy Efficient Design



Thermal Printer



Light Weight for easy transport

Easy to Understand Multiple Screen Layouts

Salient Features

- ECG, NIBP, SpO₂, Respiration, IBP, EtCO₂ and Temperature
- Arrhythmia Detection with Alarm facility
- Drug Dose Calculation and Titration table
- Pace detection
- Real time ST segment analysis
- Adult, Pediatric and Neonatal monitoring
- Dual channel IBP Monitoring
- Sidestream and Mainstream capnography
- Electrocautery and Defibrillator Protected
- 12.1" high resolution TFT color display
- Standard, Large font, Trends, OxyCRG and 7 Lead ECG display
- Color coded Visual and Audio alarms
- 20 days Graphical and Tabular Trends storage
- 5 days wave review
- Networking Capability
- Wireless CMS connectivity through WiFi
- Android compatible CMS
- Night mode facility



Central Monitoring System



View Patient's Vital data on mobile app



Wall Mount Stand with Basket

About RMS

Recorders & Medicare Systems (RMS) is a leading manufacturer of high quality medical diagnostic equipments from India since 1975. For over 40 years RMS has been pioneering a broad range of medical equipments with latest technology catering to various healthcare segments.

Vision

RMS will benefit the healthcare delivery infrastructure in India and developing countries worldwide by bringing to market high quality diagnostic equipment at affordable prices.



ECG Cable



SpO₂ Sensor



SpO₂ Ext. Cable



EtCO₂ MODULE



NIBP Cuff



Skin Temp. Probe



Rectal Temp. Probe *

Since R&D is a continuous process, to make changes in product features, specifications, aesthetics and/or to discontinue the same at any time without notice or obligation



Certified ISO 9001:2015, EN ISO 13485:2016 company

Recorders & Medicare Systems (P) Ltd.

H.O. & Works: 196, Industrial Area, Phase 1, Panchkula - 134113 Haryana, INDIA

Ph.: +91-172-2564196, 2565196, Fax: +91-172-2566196, T: 1800-1200-767

www.rmsindia.com, sales@rmsindia.com

Regd. Office: 181/5, Industrial Area, Phase 1, Chandigarh-160002, INDIA

